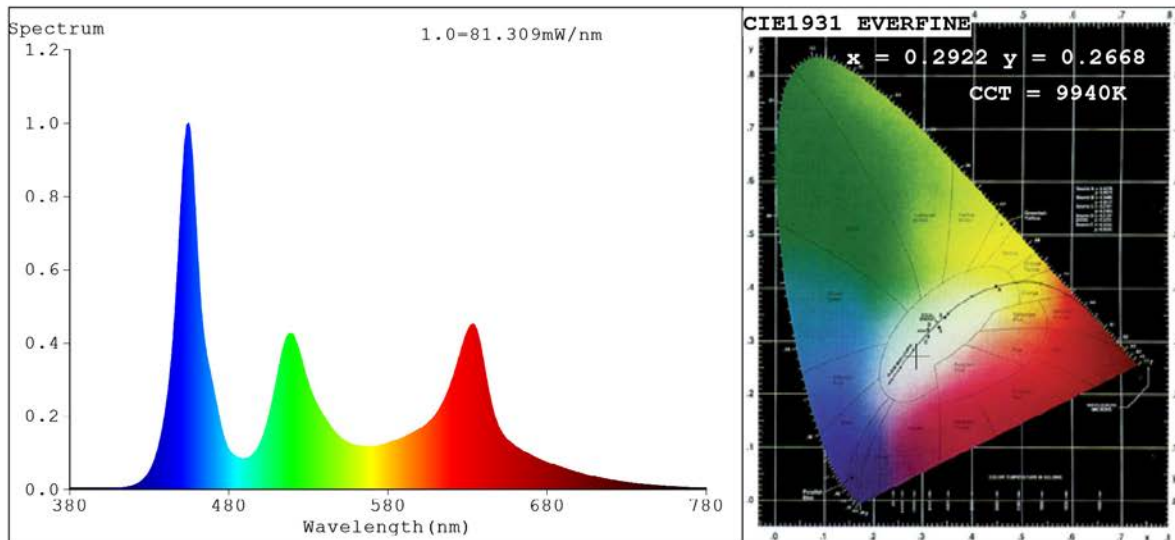


Spectrum Test Report



Color Parameters:

Chromaticity Coordinate: $x=0.2922$ $y=0.2668$ $u'=0.2081$ $v'=0.4275$

$CCT=9940K$ ($Duv=-0.0196$) Dominant WL: $\lambda_d = 459.3nm$ Purity=21.8%

Ratio: R=21.9% G=71.2% B=6.8%; Peak WL: $\lambda_p = 454.6nm$ FWHM=16.2nm

Render Index: $R_a=59.6$ CRI=54.0

R1 =44 R2 =77 R3 =78 R4 =44 R5 =56 R6 =74 R7 =77

R8 =28 R9 =0 R10=54 R11=25 R12=67 R13=50 R14=83 R15=32

Photo Parameters:

Flux = 1213 lm Eff. : 62.72 lm/W $\Phi_e = 5.166 W$ Scotopic: 3508.1 S/P: 2.8916

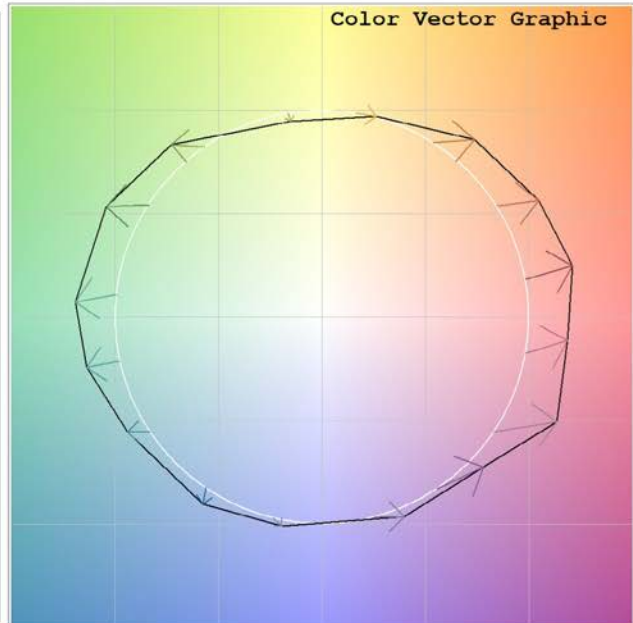
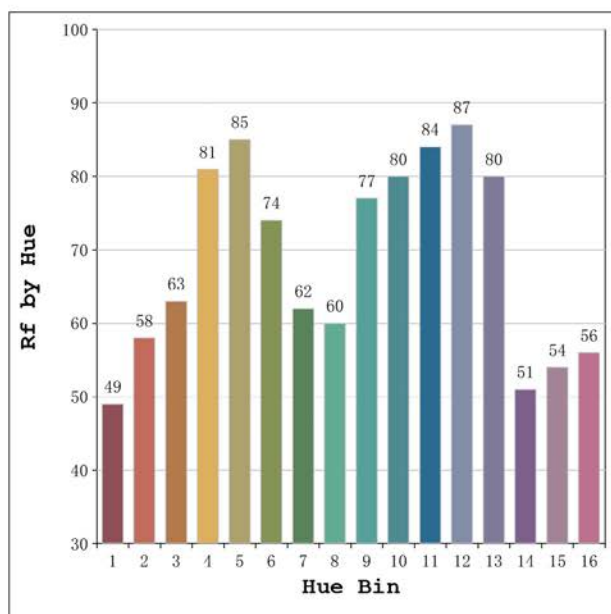
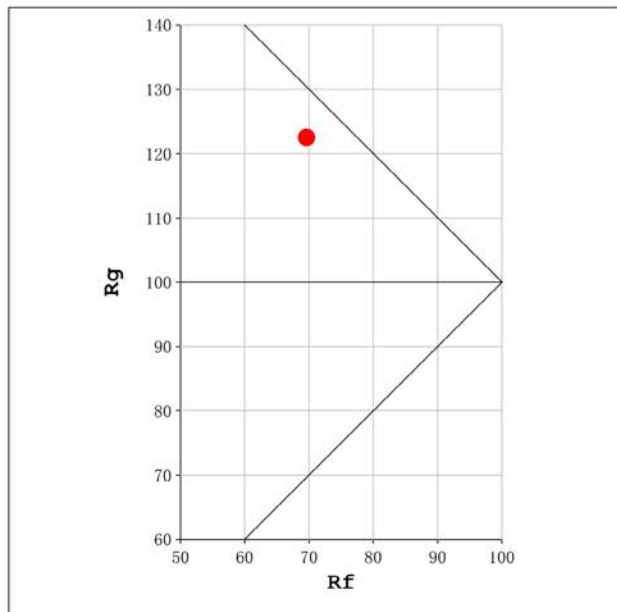
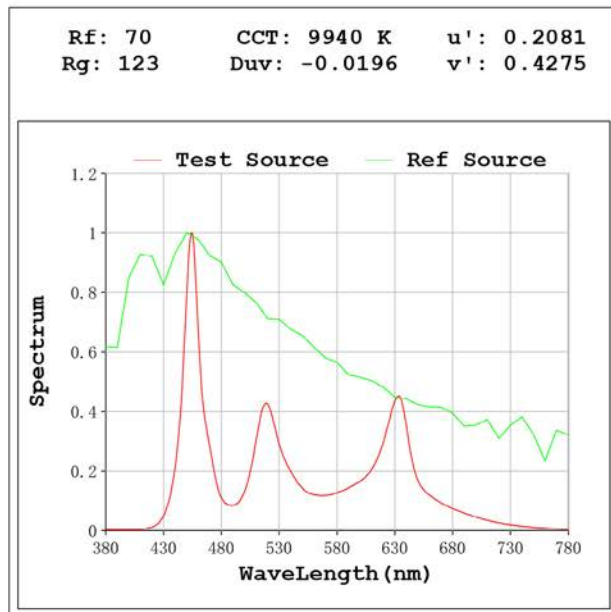
Electrical parameters:

V = 23.998 V I = 0.8060 A P = 19.34 W PF = 1.000

Status: Integral T = 378 ms $I_p = 42404$ (65%)

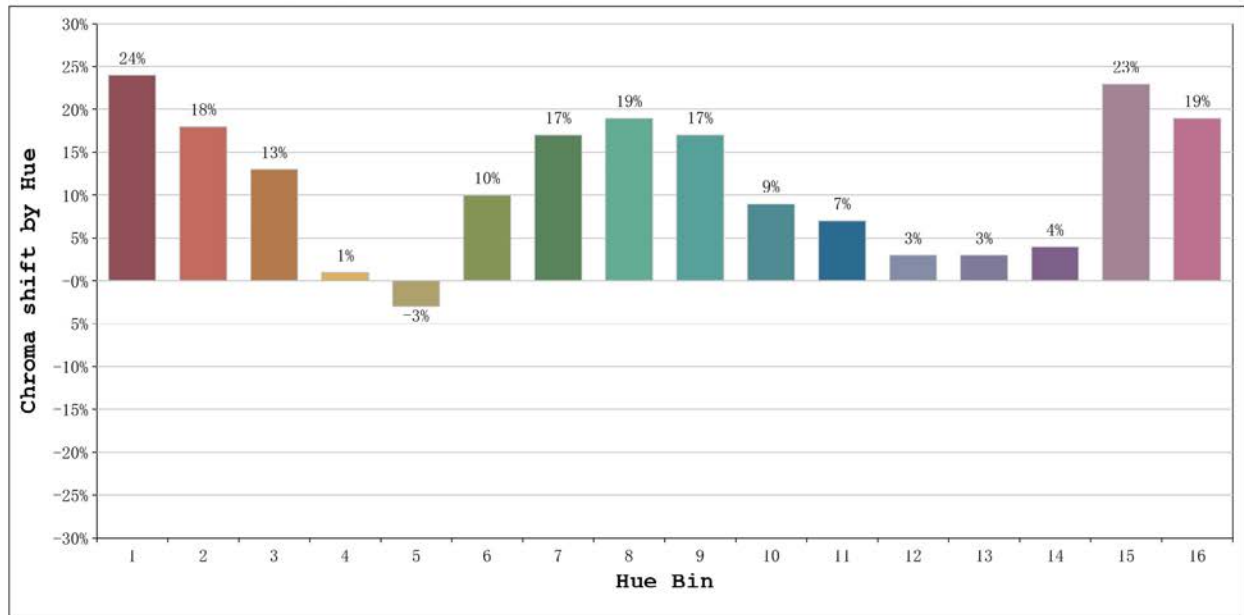
Model: Ecoled COB RGBW
 Tester: Sergio Carneros
 Temperature: 25Deg
 Manufacturer: Luz Negra

Number: 31.149
 Date: 2024-09-04 10:10:30
 Humidity: 57%
 Remarks: 100cm de tira flexible



Model:Ecoled COB RGBW
 Tester:Sergio Carneros
 Temperature:25Deg
 Manufacturer:Luz Negra

Number: 31.149
 Date:2024-09-04 10:10:30
 Humidity:57%
 Remarks:100cm de tira flexible



			Graphic shift(%)	
Hue Bin	Hue Angle	Rf	Chroma	Hue
1	0.0° - 22.5°	49	24	2
2	22.5° - 45.0°	58	18	-8
3	45.0° - 67.5°	63	13	-15
4	67.5° - 90.0°	81	1	-9
5	90.0° - 112.5°	85	-3	0
6	112.5° - 135.0°	74	10	13
7	135.0° - 157.5°	62	17	12
8	157.5° - 180.0°	60	19	7
9	180.0° - 202.5°	77	17	0
10	202.5° - 225.0°	80	9	-5
11	225.0° - 247.5°	84	7	3
12	247.5° - 270.0°	87	3	5
13	270.0° - 292.5°	80	3	14
14	292.5° - 315.0°	51	4	25
15	315.0° - 337.5°	54	23	21
16	337.5° - 360.0°	56	19	10

Model:Ecoled COB RGBW
Tester:Sergio Carneros
Temperature:25Deg
Manufacturer:Luz Negra

Number: 31.149
Date:2024-09-04 10:10:30
Humidity:57%
Remarks:100cm de tira flexible